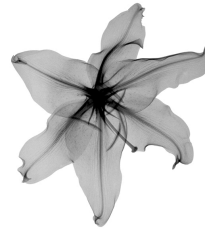


Science Learning Centre Yorkshire and the Humber

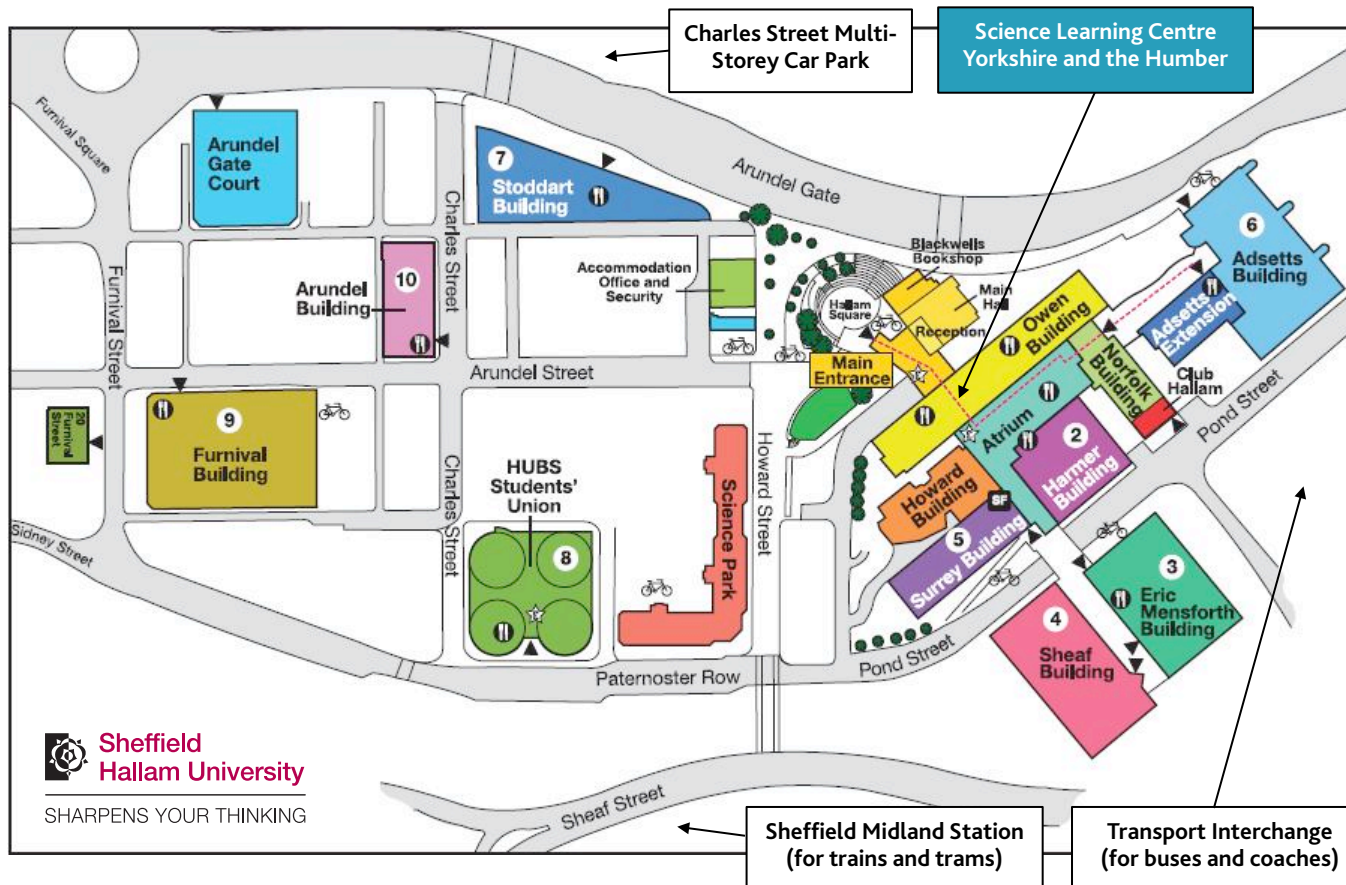
Science
LEARNING CENTRES



Sheffield Hallam University
Howard Street
Sheffield
S1 1WB

Tel: 0114 225 4891
Web: www.sciencelearningcentres.org.uk
Email: enquiries@yorkshumber.slcs.ac.uk

The Centre is situated on Level 9 of the Owen Building (the tall one with the poem on its side!) at the heart of the City Campus of Sheffield Hallam University. Access is via the main entrance on Level 5 at the front of the University or by the rear entrance leading to the Atrium on Level 2. Proceed to the main Owen Building elevator foyer, take the lift to Level 9 and report to our reception. For special access needs or other requirements please contact us.



Travel Instructions

Public transport

Sheffield's Midland Railway Station and Travel Interchange are both just a few minutes walk away from City Campus, serviced by many bus, tram and train routes into the City Centre. Sheffield has a very good *Park & Ride* scheme with four locations across the City. For details of these, as well as routes and timetables visit www.travelsouthyorkshire.com or call Traveline on 01709 515151.

Driving

If coming into Sheffield on the M1, take junction 33, then follow signs for A630 Sheffield City Centre. Continue on the A630 as it merges into the A57. This dual carriageway ends at a large roundabout with traffic signals (Park Square). Take the fourth exit from the roundabout signposted City Centre, then the third left turn into Arundel Gate. The City Campus is approximately 300 metres along on the left hand side.

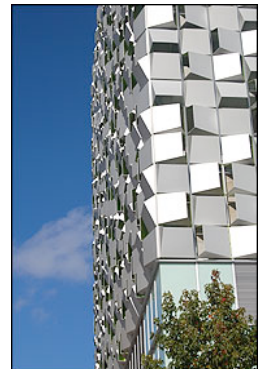
Please refer to the separate map for this and other routes and parking. See the public transport section for *Park & Ride*.

Parking

The university has very limited permit only car parking and we are usually unable to secure a permit for visitors. However, there are many other car parks nearby of varying size and cost.

For easiest access the new Charles Street multi-storey car park may be the best option - this distinctive building, locally dubbed 'The Cheese Grater', is next to the new 32 storey tower block right opposite the City Campus on Arundel Gate.

Alternatively, to avoid driving into the city centre, please see the public transport section above for details of *Park & Ride*.



Ring Road and Primary Roads

J7 Shalesmoor

Junction Name and Number

Main Radial Roads

Car Park Access Roads

Pedestrianised Area

Tram Track and Stops

P

Car Parks - Long Stay

P

Car Parks - Short Stay

Eldon Street Shopmobility

North

